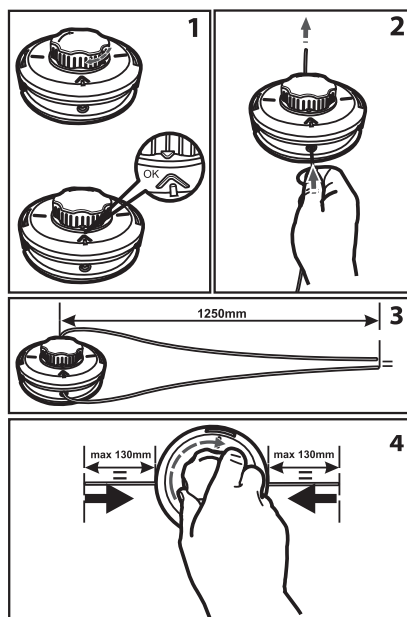




PRODUCT FEATURES

Reinforced construction that fits most cutter/trimmer models on the market.
 Easy-Load system - string replacement without the need to disassemble the head.
 Automatic string extension during "Tap&Go" operation.



CODE	MOUNT	LINE DIA.	INCLUDED LINE	
EATOP01	left thread M10 x 1,25	from 1.5 mm to 3.0 mm	round Ø 2.7 mm (2.5 m)	20/40